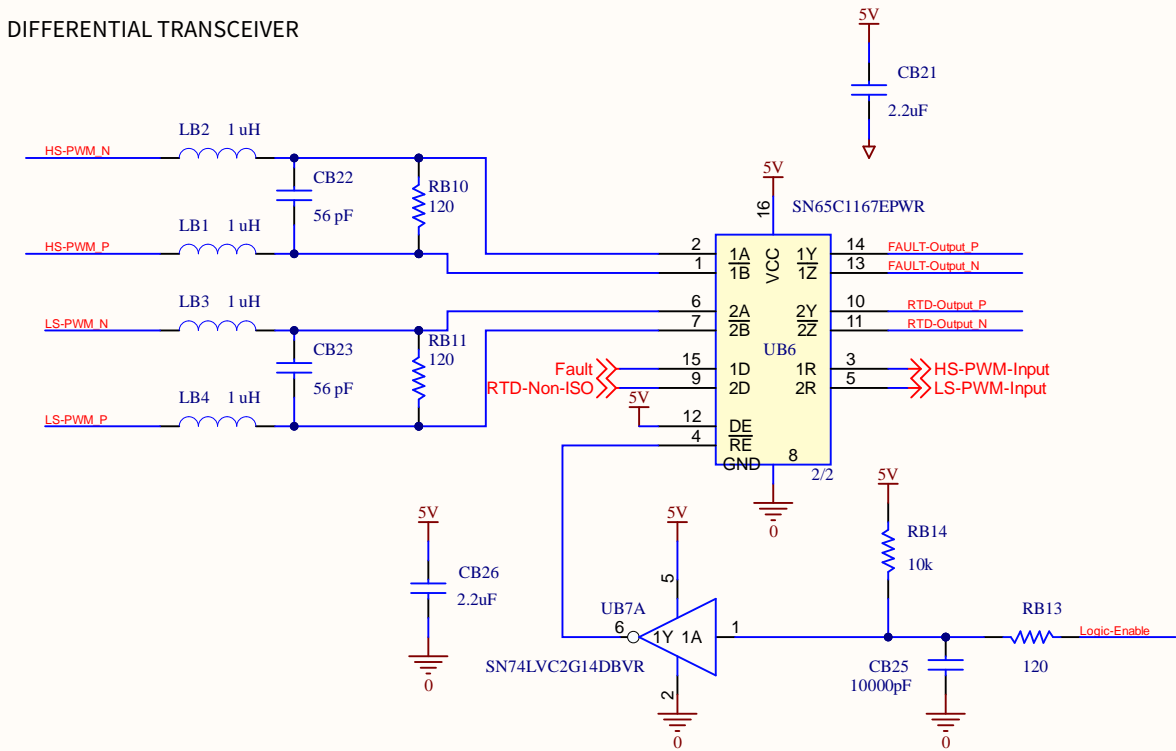


Change Log:

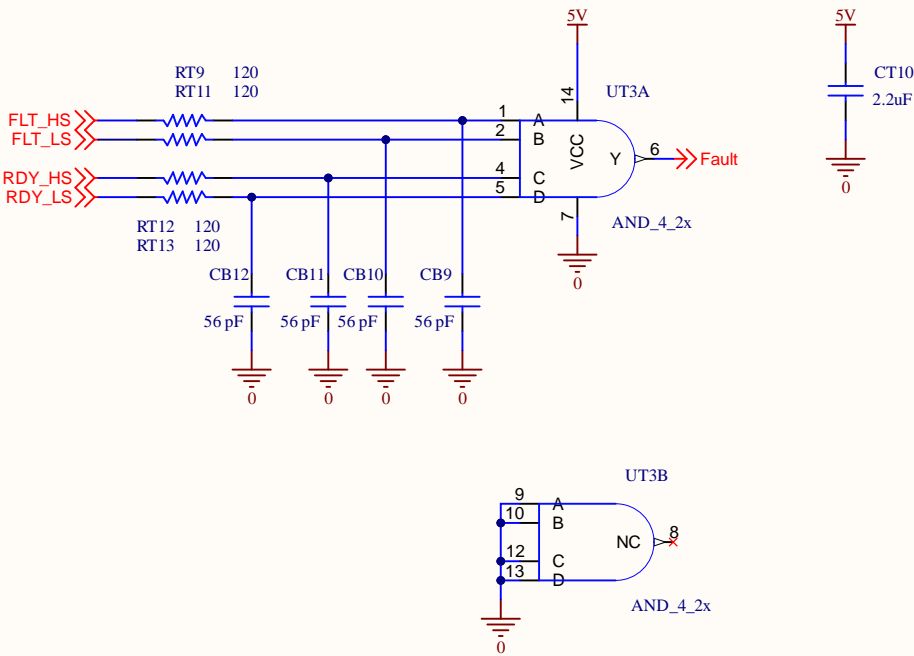
REV 1.
Same IC as for CGD1700HB2P-XM3 (ADum4146CRWZ)
Temperature Feedback (RTD or NTC): Resistance to Duty Cycle Modulation
DESAT circuit: Internal current source removed
VDESAT = 3.5V, Voc-trip = 2.9 V, RT2/RT39 = 887 Ohms
MMCX Connector Jack for easy Gate Signals measurements (PN: MMCX-J-P-H-ST-TH1)
Inline pinout

REV 1.1
Gate Signals labels on silkscreen

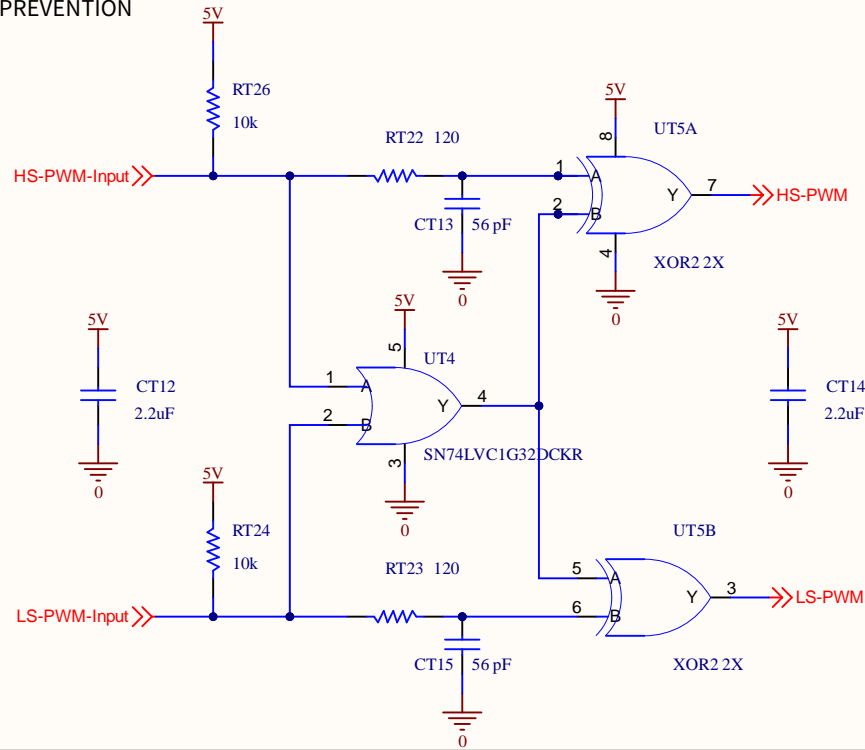
DIFFERENTIAL TRANSCEIVER



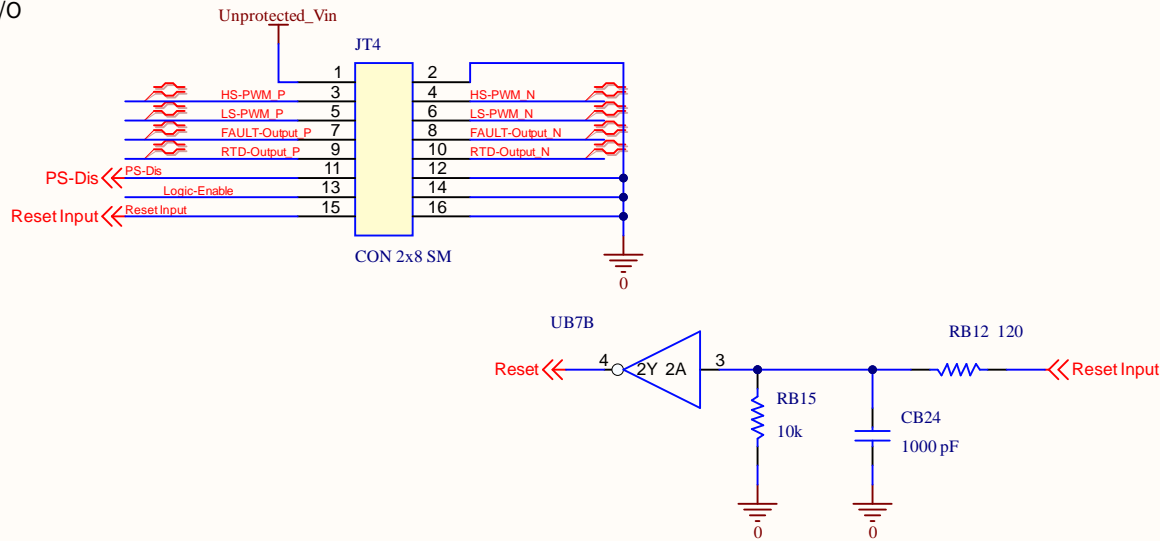
FAULT COMBINATION



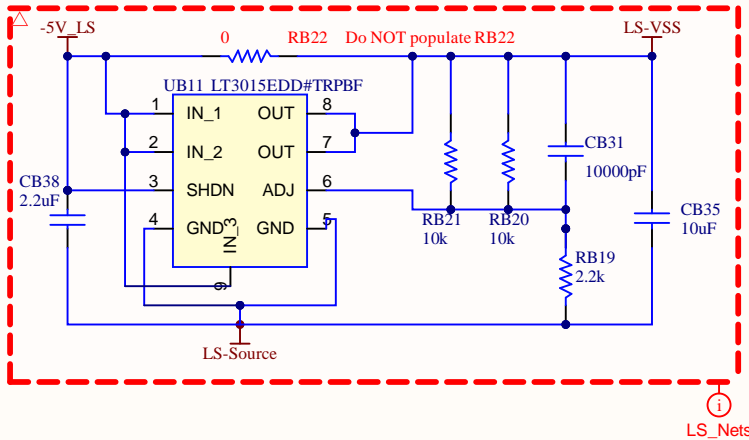
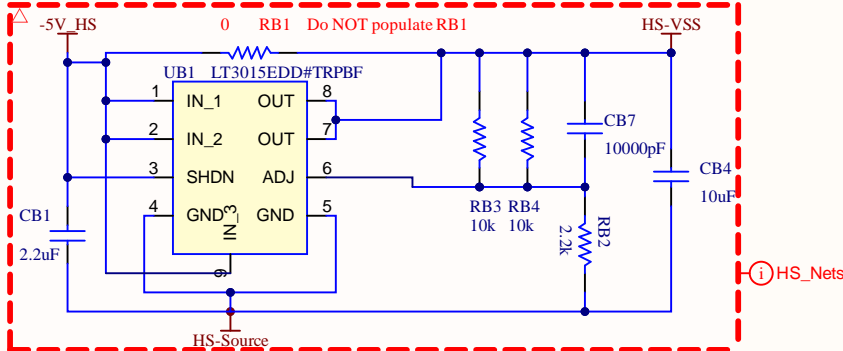
SHOOT-THROUGH PREVENTION



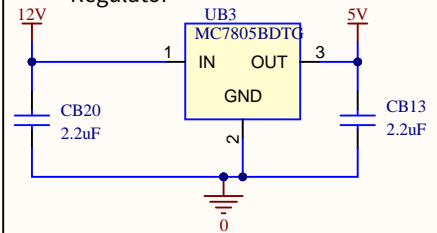
I/O



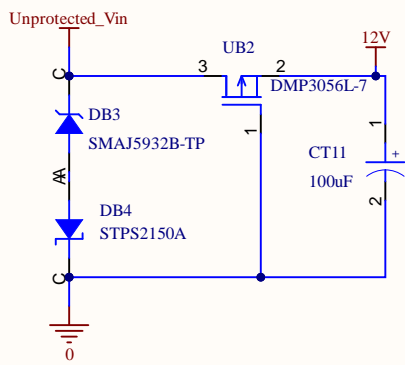
-4 V Negative Regulators



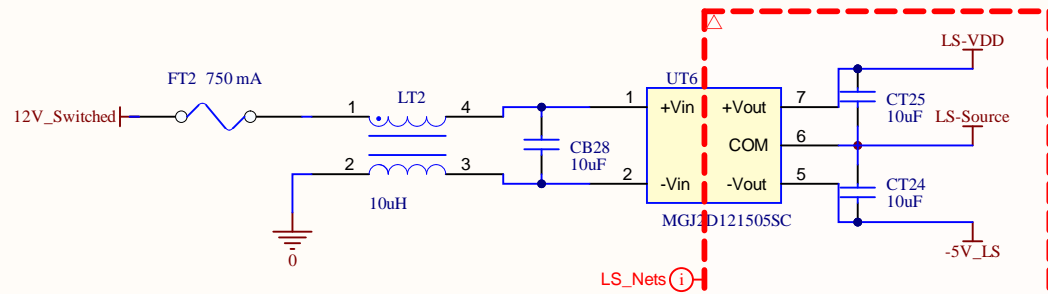
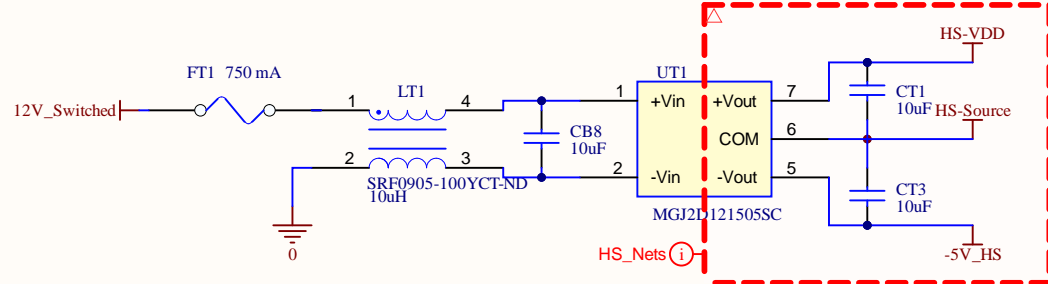
+5 V Primarily Regulator



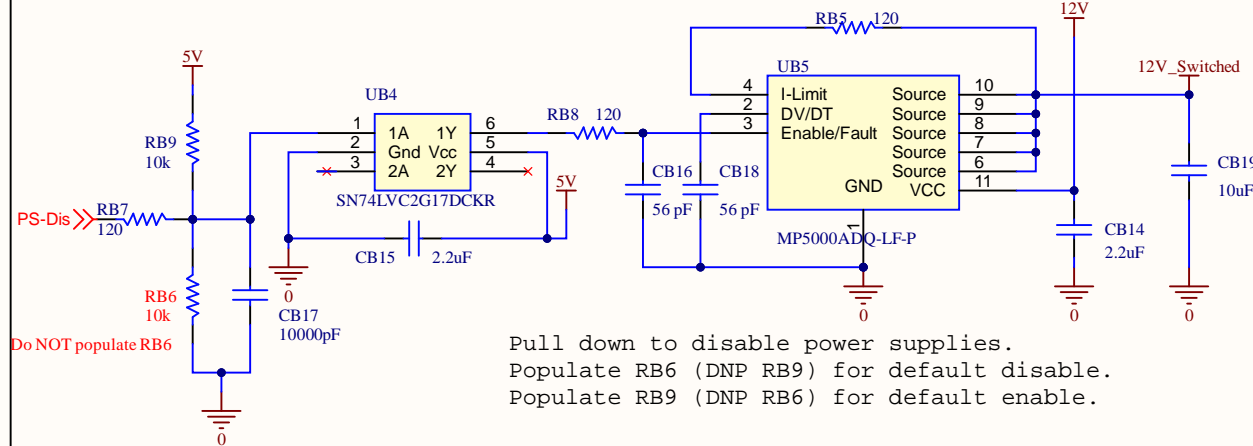
Input Protection



Isolated DC/DC Converters



Power Supply Disable



Pull down to disable power supplies.
Populate RB6 (DNP RB9) for default disable.
Populate RB9 (DNP RB6) for default enable.

Title: Power Supplies.SchDoc

Size: ANSI-B

Date: 6/27/2024

File: Power Supplies.SchDoc

P/N: *

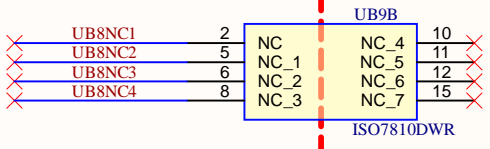
Time: 4:17:53 PM

Project Name: CGD1200HB2P-XM3_REV1.PjPcb

Sheet: * of *

Revision: -





Wolfspeed®