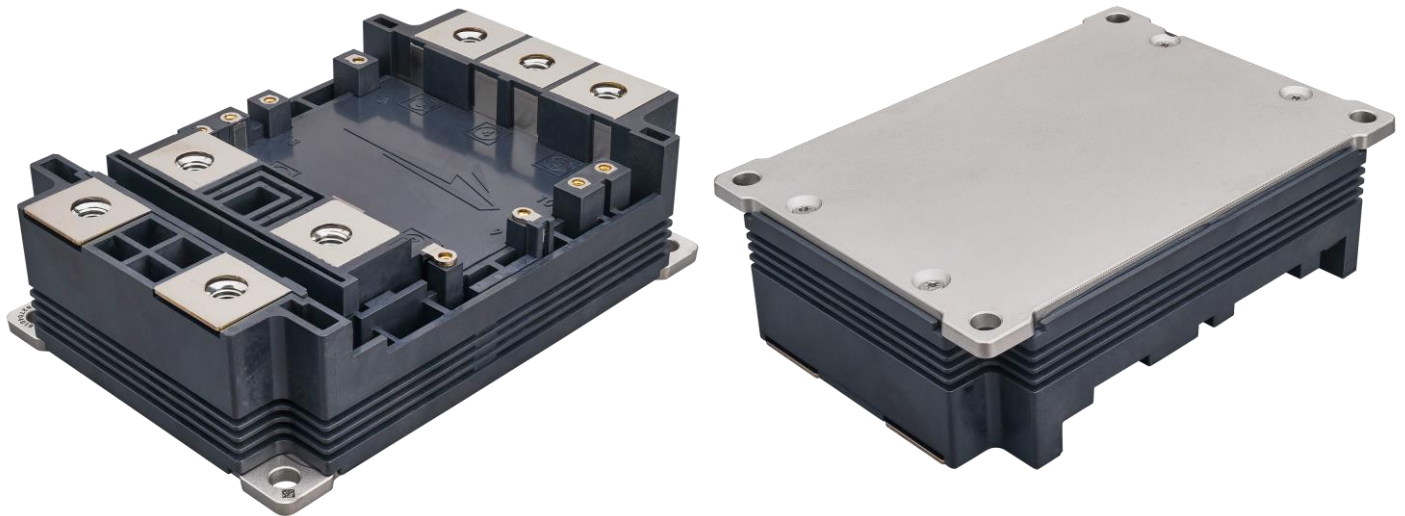


# USER GUIDE PRD-08408

## LM MODULE SIGNAL PINOUT USER GUIDE



# USER GUIDE PRD-08408

## LM MODULE SIGNAL PINOUT USER GUIDE

### Contents

|  |   |
|--|---|
| LM Module Signal Pinout User Guide ..... | 1 |
| 1. INTRODUCTION .....                    | 3 |
| 2. PINOUT .....                          | 3 |
| 3. LM POWER MODULES.....                 | 4 |
| 4. LM GATE DRIVER BOARDS .....           | 4 |
| 5. NOTES & DISCLAIMER .....              | 5 |
| 6. REVISION HISTORY .....                | 6 |

## 1. INTRODUCTION

This document describes the pinout of the Wolfspeed LM power module and refers to the available companion gate driver boards.

## 2. PINOUT

Table 1. LM Pinout Nomenclature

| Pin Number | Description             | Notes                      |
|------------|-------------------------|----------------------------|
| 1, 2       | High-side Drain         | Power Terminals            |
| 3, 4, 5    | Output/Midpoint         | Power Terminals            |
| 6, 7       | Low-side Source         | Power Terminals            |
| 8          | V- Sense                | Signal Terminals           |
| 9          | V+ Sense                | Signal Terminals           |
| 10         | High-side Gate          | Signal Terminal            |
| 11         | High-side Source Kelvin | Signal Terminal            |
| 12         | Midpoint/Phase Aux      | Signal Terminal            |
| 13         | NTC                     | Temperature-sense Terminal |
| 14         | Low-side Gate           | Signal Terminal            |
| 15         | Low-side Source Kelvin  | Signal Terminal            |

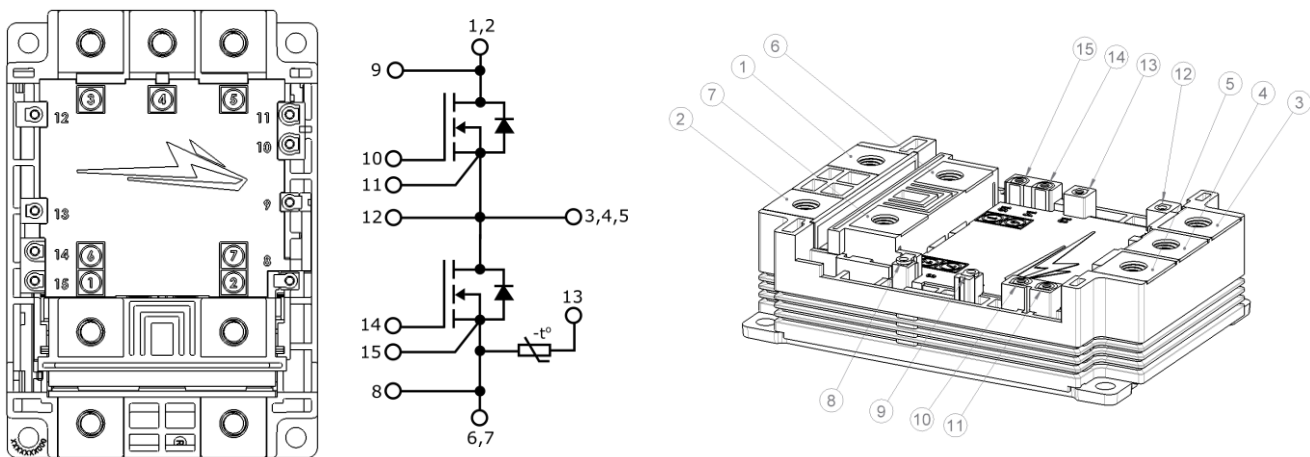


Figure 1. LM Pinout Configuration

### 3. LM POWER MODULES

Table 2. LM Power Modules

| Module       | Description  |
|--------------|--|
| CAB600M33LM3 | 3300 V, 2.7 mΩ Switching-Optimized SiC MOSFET Half-Bridge Power Module |

### 4. LM GATE DRIVER BOARDS

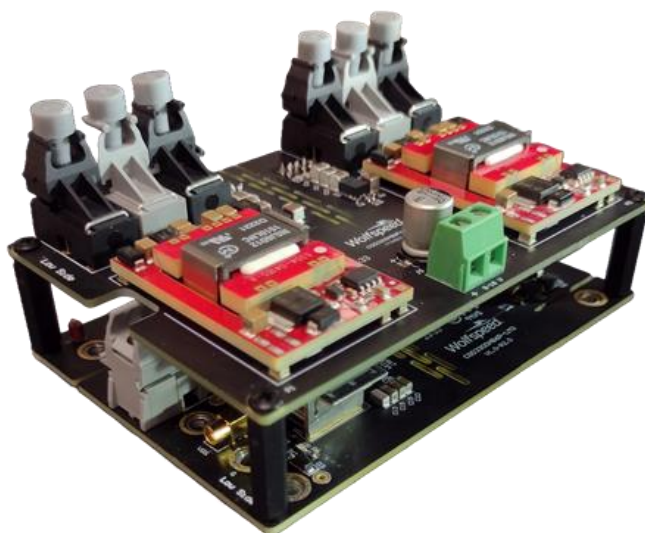


Figure 2. CGD3300HB6P-LM3 Gate Driver

Table 2. LM3 Gate Driver Boards

| Gate Driver     | Designed By | Gate Driver IC | Key Features  |
|-----------------|-------------|----------------|---|
| CGD3300HB6P-LM3 | Wolfspeed   | IXDD614YI      | Form-factor fit with multi-source driver IC footprint |

## 5. NOTES & DISCLAIMER

This document and the information contained herein are subject to change without notice. Any such change shall be evidenced by the publication of an updated version of this document by Wolfspeed. No communication from any employee or agent of Wolfspeed or any third party shall affect an amendment or modification of this document. No responsibility is assumed by Wolfspeed for any infringement of patents or other rights of third parties which may result from use of the information contained herein. No license is granted by implication or otherwise under any patent or patent rights of Wolfspeed.

Notwithstanding any application-specific information, guidance, assistance, or support that Wolfspeed may provide, the buyer of this product is solely responsible for determining the suitability of this product for the buyer's purposes, including without limitation for use in the applications identified below, and for the compliance of the buyers' products, including those that incorporate this product, with all applicable legal, regulatory, and safety-related requirements.

This product has not been designed or tested for use in, and is not intended for use in, applications in which failure of the product would reasonably be expected to cause death, personal injury, or property damage, including but not limited to equipment implanted into the human body, life-support machines, cardiac defibrillators, and similar emergency medical equipment, aircraft navigation, communication, and control systems, aircraft power and propulsion systems, air traffic control systems, and equipment used in the planning, construction, maintenance, or operation of nuclear facilities.

### RoHS Compliance

The levels of RoHS restricted materials in this product are below the maximum concentration values (also referred to as the threshold limits) permitted for such substances, or are used in an exempted application, in accordance with EU Directive 2011/65/EC (RoHS2), as implemented January 2, 2013. RoHS Declarations for this product can be obtained from your Wolfspeed representative or from the Product Documentation sections of [www.wolfspeed.com](http://www.wolfspeed.com).

### REACH Compliance

REACH substances of high concern (SVHCs) information is available for this product. Since the European Chemical Agency (ECHA) has published notice of their intent to frequently revise the SVHC listing for the foreseeable future, please contact your Wolfspeed representative to ensure you get the most up-to-date REACH SVHC Declaration. REACH banned substance information (REACH Article 67) is also available upon request.

#### Contact information:

4600 Silicon Drive  
Durham, NC 27703 USA  
Tel: +1.919.313.5300  
[www.wolfspeed.com/power](http://www.wolfspeed.com/power)

PATENT: <https://www.wolfspeed.com/legal/patents>

The information in this document is subject to change without notice.

## 6. REVISION HISTORY

| Date       | Revision | Changes         |
|------------|----------|-----------------|
| March 2024 | 1.0      | Initial Release |