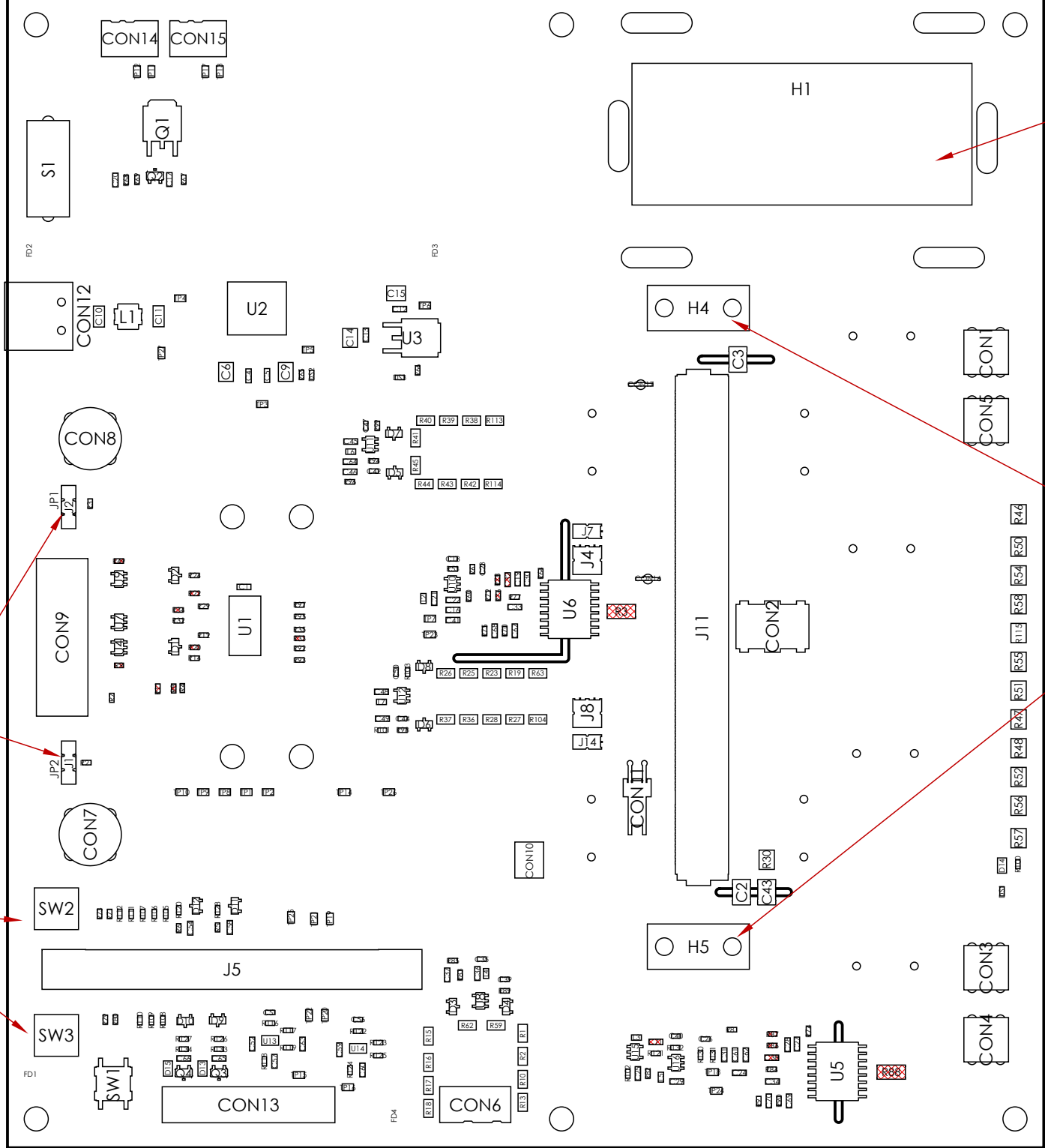


Top side (Scale 1:1)

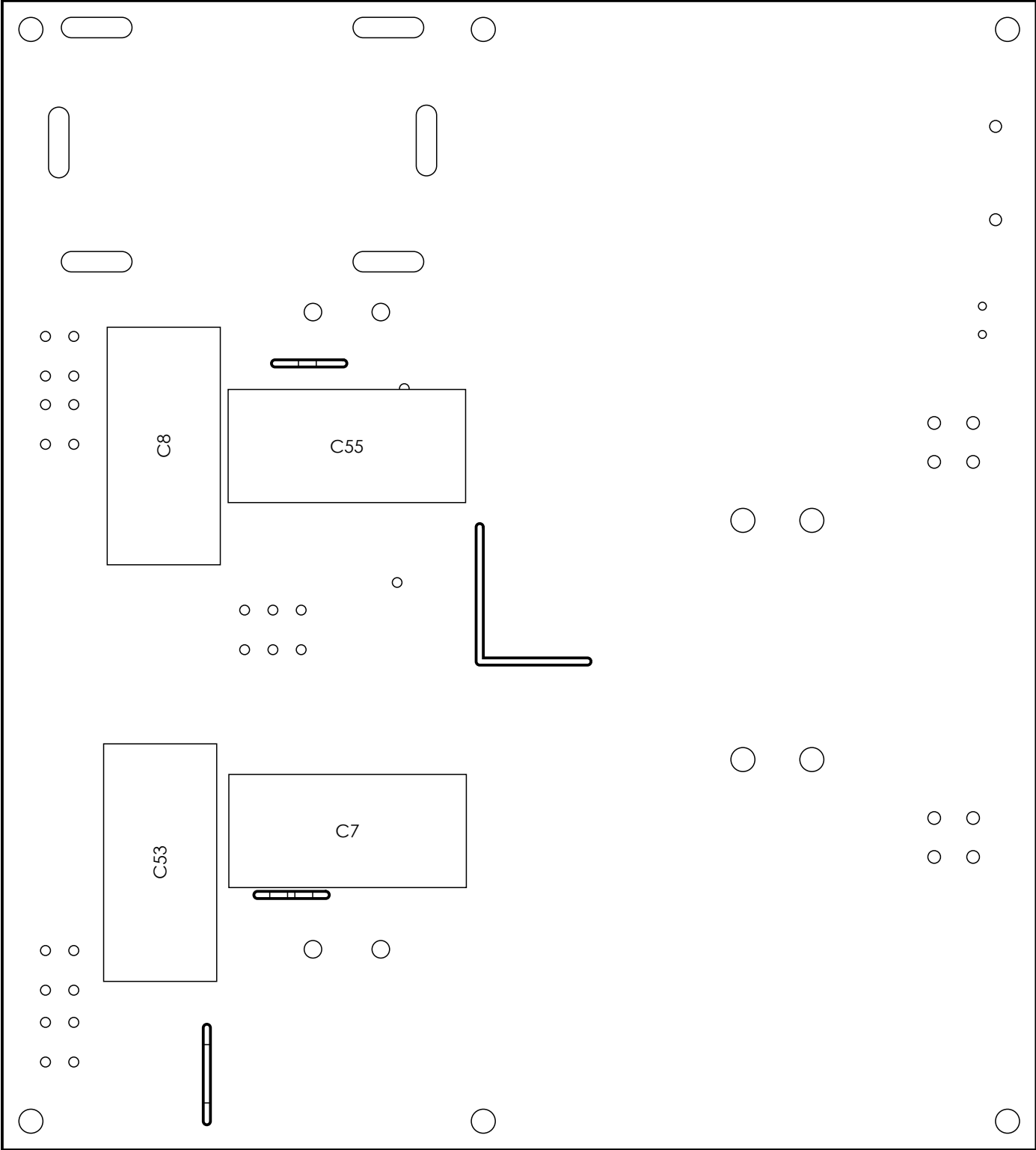


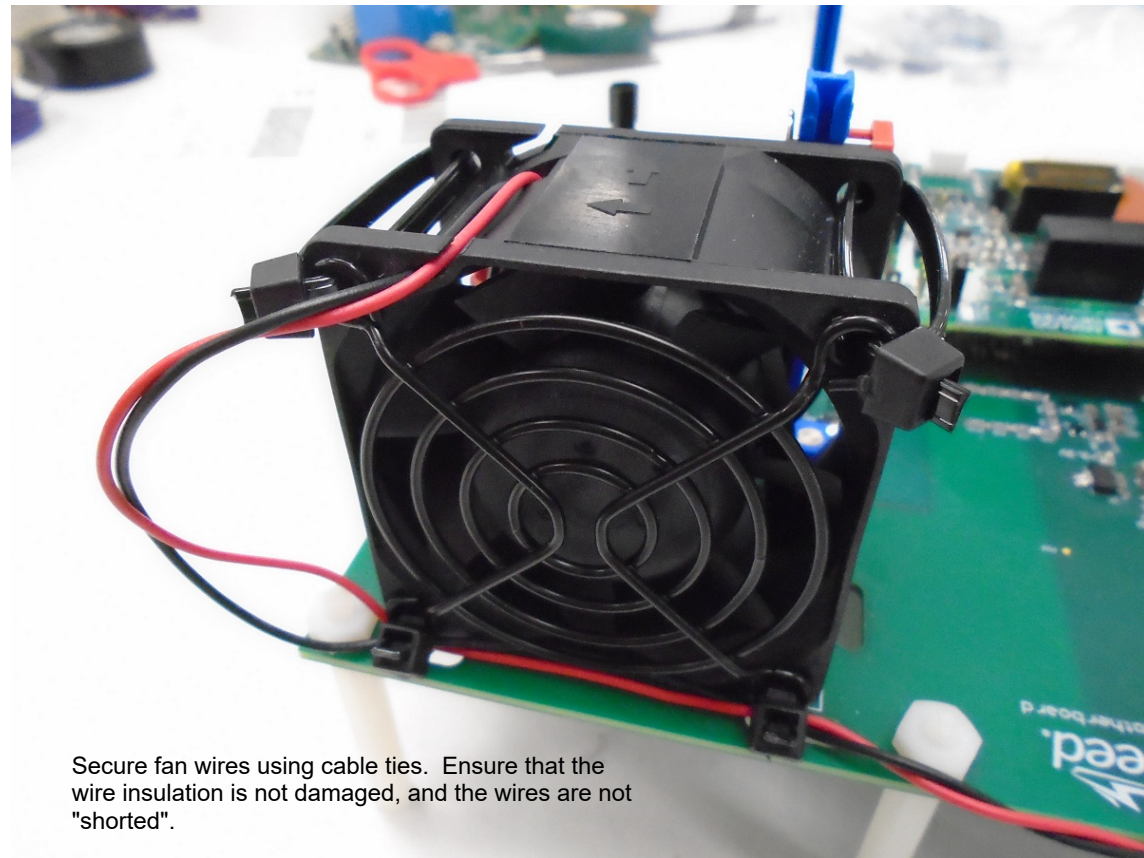
Pos. 1  
Pos. 2

SW2 and SW3 switch positions  
Pos. 1 - OFF  
Pos 2 - ON

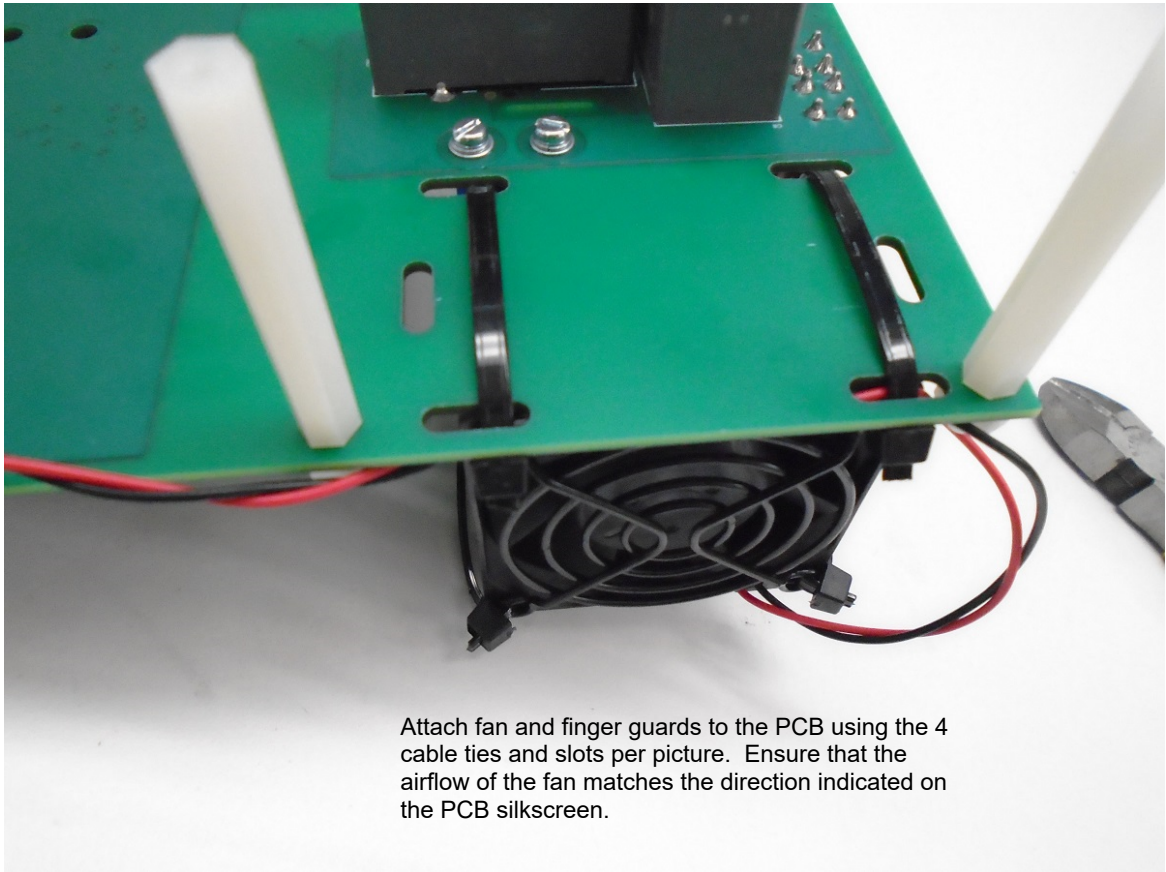
- Notes:
- 1. Refer to BOM for assembly variants.
  - 2. All solder and materials to be RoHS 3 compliant.
  - 3 a. See Figure 1 on sheet 3 for fan attachment and wiring details.  
b. Refer to drawing no. AD-072622-01 for fan connector wiring instructions.  
c. Ensure airflow of fan is in same direction shown on silkscreen.
  - 4 Install edge card guides on TOP side using the provided hardware.
  - 5 Install JP1 and JP2 for the 'BNC' configuration.

Bottom side (Scale 1:1)





Secure fan wires using cable ties. Ensure that the wire insulation is not damaged, and the wires are not "shorted".



Attach fan and finger guards to the PCB using the 4 cable ties and slots per picture. Ensure that the airflow of the fan matches the direction indicated on the PCB silkscreen.

Figure 1